

**Features:**

- \* Available in 2 thru 24 circuit housing
- \* Voltage rating 600V (R.M.S.)
- \* Current rating 9 Amps per circuit

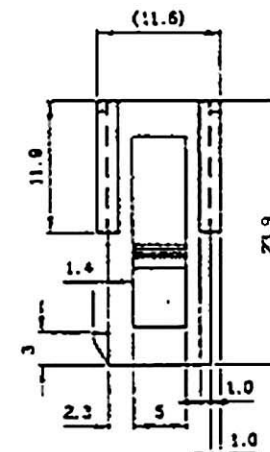
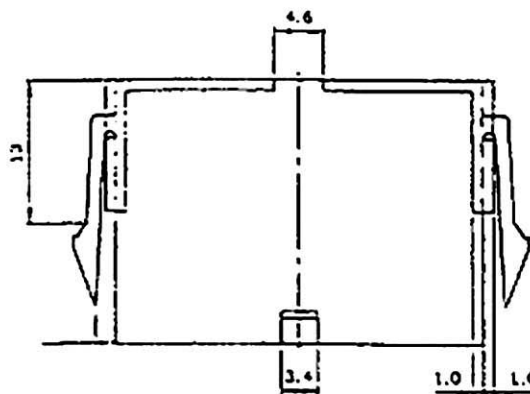
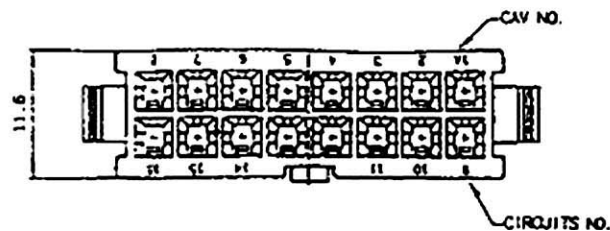
**Specification:**

**Material:**

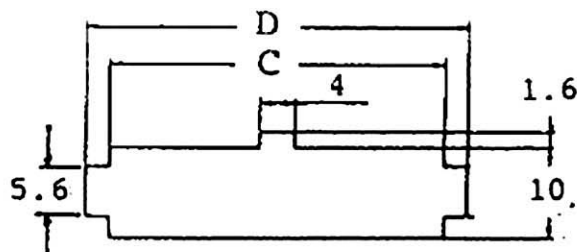
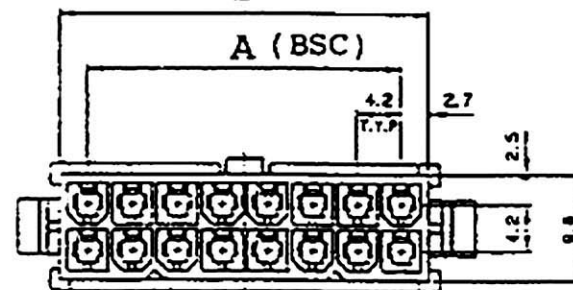
- \* UL 94V-2 nylon 66

**Electrical:**

- \* Voltage rating: 600V AC/DC
- \* Current rating: 9A max
- \* Withstanding Voltage: 1500V AC for 60 seconds
- \* Insulation Resistance: 1000M ohms min
- \* Temperature Rise: 30°C max
- \* Storage Temperature Range: -40°C to 105°C



B (REF)



Mounting Hole Details for 4259-NE Housing

Max. Panel Thickness: 2.54mm

**Dimensional Information (mm)**

Circuits	Dim. A	Dim. B	Dim. C	Dim. D	Circuits	Dim. A	Dim. B	Dim. C	Dim. D	Circuits	Dim. A	Dim. B	Dim. C	Dim. D
2		5.4	5.8	10.8	10	16.8	22.2	22.0	27.6	18	33.0	39.0	39.4	44.4
4	4.2	9.8	10.0	15.0	12	21.0	28.4	28.8	31.8	20	37.8	43.2	43.8	48.9
6	8.4	13.8	14.2	19.2	14	25.2	30.8	31.0	35.0	22	42.0	47.4	47.8	52.9
8	12.6	18.0	18.4	23.4	16	29.4	34.8	35.2	40.2	24	46.2	51.8	52.0	57.3

RoHS  
Compliant

**HSM** 玄茂科技股份有限公司  
HSUAN MAO TECHNOLOGY CO., LTD.

APPD. 核准 DWG. 製圖 DATE 制表日 2006/06/02		TOLERANCE 容許公差 0.0 ± 0.0 ± .00 ± UNIT 單位 M M PAGE 張數 1 OF 1 REV. 版本 A	PART NAME 品名 MINI FIT 4.2mm FEMALE HOUSING WHITE COLOR ROHS LOW-LEAD PART NO. 料號 H5050-XXPDW000R
---	--	---	--