

1 2 3 4 5 6 7 8

A

B

C

D

E

F

G

H

A

B

C

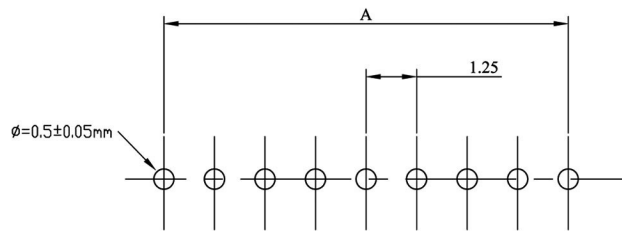
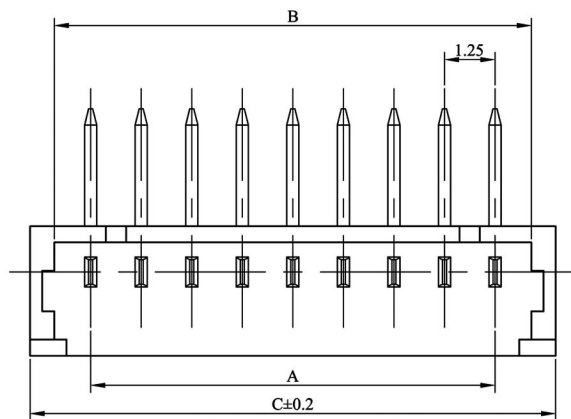
D

E

F

G

H



RECOMMENDED PC BOARD HOLE DIMM.

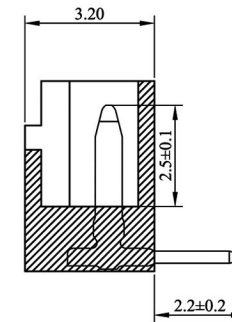
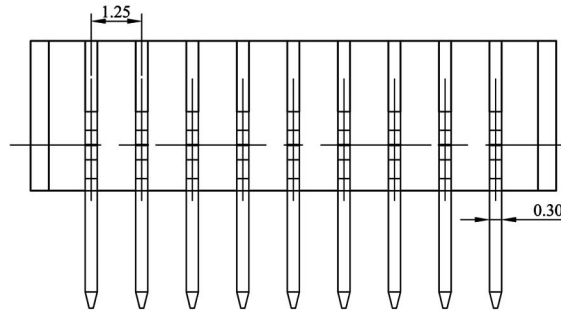
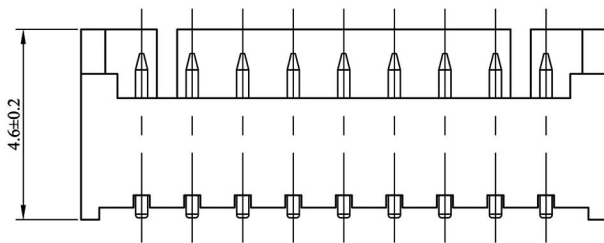
LOCKING WINDOW:
ONE PLACE FOR 2 AND 3 CKT.
AND TWO PLACES FOR MORE THAN 3 CKT.

MATERIAL:

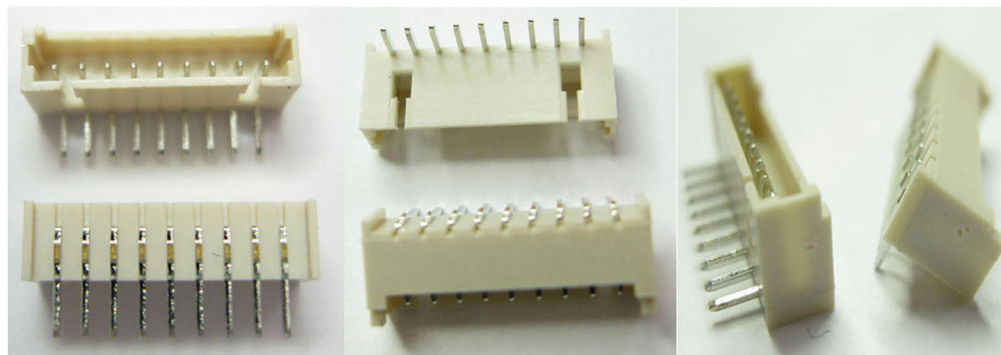
WAFER: HIGH TEMPERATURE PLASTIC
NYLON46 UL94V-0
PIN: HIGH STRENGTH BRASS
WITH TIN OVER NICKEL PLATED

SPECIFICATION:

CURRENT RATE: 1 AMP
INSULATION RESISTANCE: 500 MΩ MIN
CONTACT RESISTANCE: 20 MΩ MAX
DIELECTRIC VOLTAGE: 500 V AC FOR ONE MINUTE
OPERATION TEMPERATURE: -25°C TO +85°C



CKT.	A	B	C
2	1.25	3.15	4.25
3	2.50	4.40	5.50
4	3.75	5.65	6.75
5	5.00	6.90	8.00
6	6.25	8.15	9.25
7	7.50	9.40	10.50
8	8.75	10.65	11.75
9	10.00	11.90	13.00
10	11.25	13.15	14.25
11	12.50	14.40	15.50
12	13.75	15.65	16.75
13	15.00	16.90	18.00
14	16.25	18.15	19.25
15	17.50	19.40	20.50



<p>RoHS Compliant</p>		<p>HSM 玄茂科技股份有限公司 HSUAN MAO TECHNOLOGY CO., LTD.</p>	
<p>APPD. 核准</p>		<p>TOLERANCE 容許公差</p>	<p>PART NAME 品名</p>
<p>DWG. 製圖</p>	<p>Hedy</p>	<p>SCALE 比例 參考</p>	<p>1.25mm WAFER 1XXXP RIGHT ANGLE TIN PLATING BEIGE COLOR LOW-LEAD</p>
<p>DATE 制表日</p>	<p>2010/10/04</p>	<p>UNIT 單位</p>	<p>PART NO. 料號</p>
		<p>PAGE 張數</p>	<p>W1125-XXPRTXC0R</p>
		<p>REV. 版次</p>	
		<p>MM A4</p>	
		<p>1 / 1</p>	
		<p>A</p>	

1 2 3 4 5 6 7 8