

## Product Specification

1.7", 2.0", 2.4"

### TFT-LCD Driver Board

FOR APPROVAL

MODEL NO.: AT9910-V1.0

PCB NO.: AT9910-V1.0

#### Customer's Approval

Customer:	
Date:	
By:	

Confirmed By	Prepared By	Manufacture NO	
		Version	1.0
		Total Pages	6
		Date	2008.12

## Features

- Support AU 1.7", 2.0", 2.4" and DI 2.4"
- Support NTSC and PAL video input auto change

## Mechanical Specification

### Board Dimension

Dimension	Specification	Unit
Length	56.0	mm
Width	43.5	mm
Thickness	7	mm

## Video Input Signal

Video-Composite signal 1.0 V<sub>p-p</sub> 75Ω

## Operating Temperature

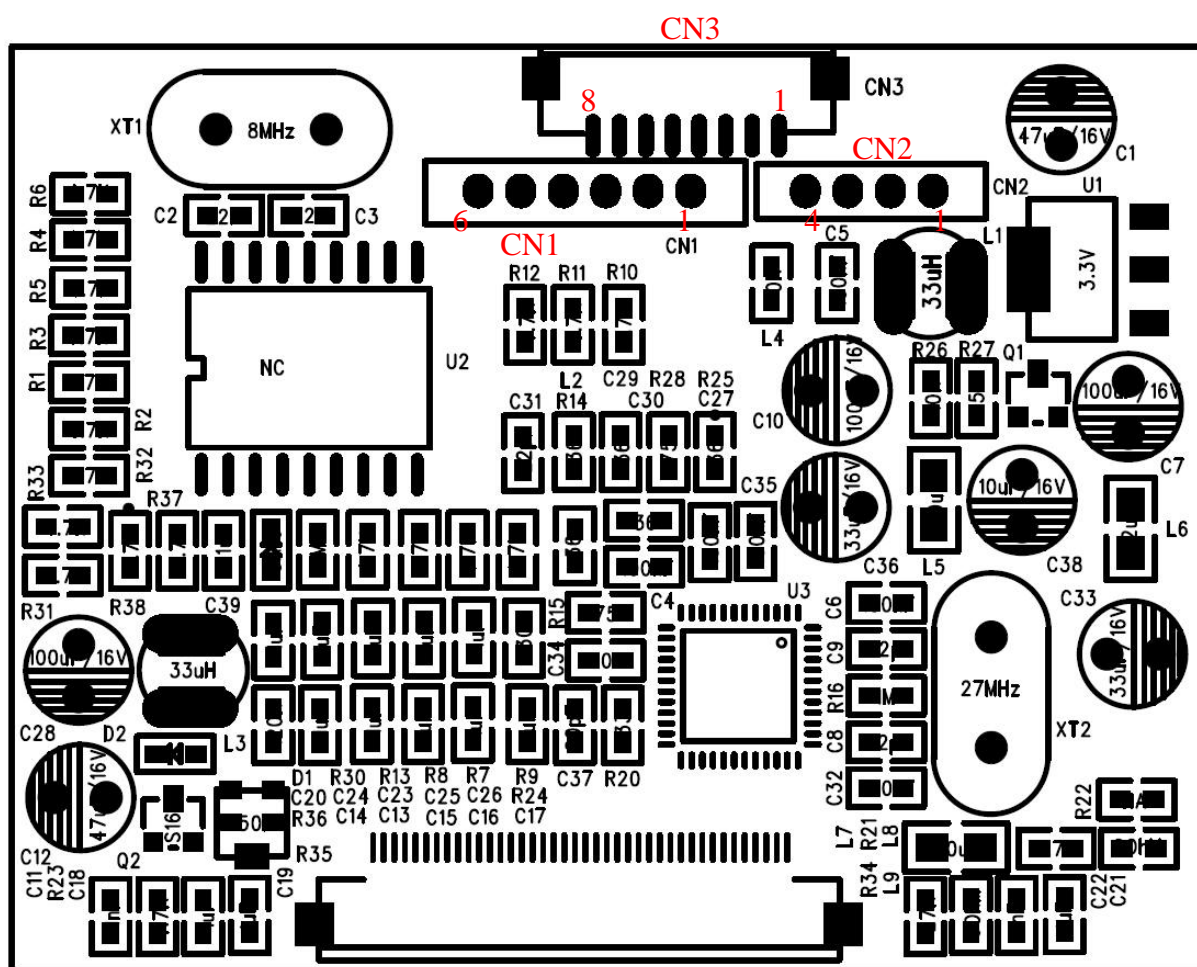
0°C ~ 70°C

## Electrical Characteristics

Item	Symbol	Condition	Min	Typ	Max	Unit	Remark
Supply Voltage	Vcc	GND = 0		5		V	
Supply Current	Icc	Vcc = 5		< 150		mA	

## Driver Board Specification

### Terminal Drawing



CN4

<b>CN1</b>	
<b>PIN</b>	<b>Connection</b>
1	Vdd = 3.3V (output)
2	Brightness Adjustment
3	GND
4	Vdd = 3.3V (output)
5	Color Adjustment
6	GND

<b>CN2</b>	
<b>PIN</b>	<b>Connection</b>
1	VCC +5V
2	GND
3	GND
4	CVBS (Video-Composite)

<b>CN3</b>	
<b>PIN</b>	<b>Connection</b>
1	VCC +5V
2	GND
3	CVBS (Video-Composite)
4	Vdd = 3.3V (output)
5	NC
6	Color Adjustment
7	Brightness Adjustment
8	GND

<b>CN4</b>	
<b>PIN</b>	<b>Connection</b>
1~40	TFT LCD FPC Connector

# Outline Drawing

