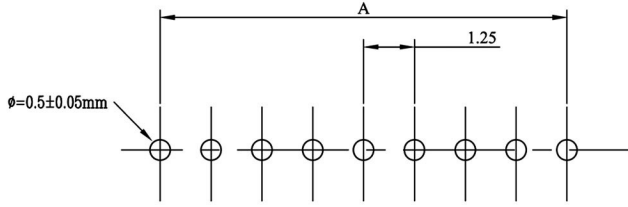
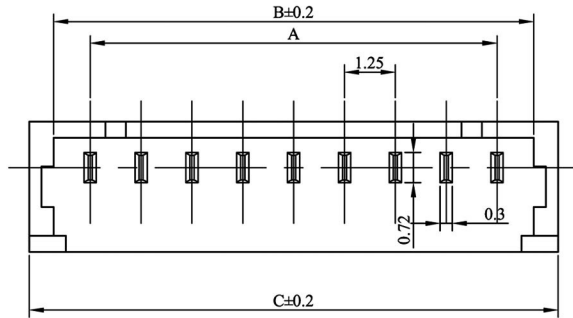


1 2 3 4 5 6 7 8

A

A



RECOMMENDED PC BOARD HOLE DIMM.

LOCKING WINDOW:
ONE PLACE FOR 2 AND 3 CKT.
AND TWO PLACES FOR MORE THAN 3 CKT.

MATERIAL:

WAFER:HIGH TEMPERA TURE PLASTIC
NYLON46 UL94V-0
PIN:HIGH STRENGTH BRASS
WITH TIN OVER NICKEL PLATED

SPECIFICATION:

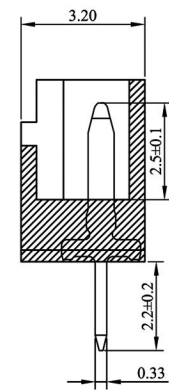
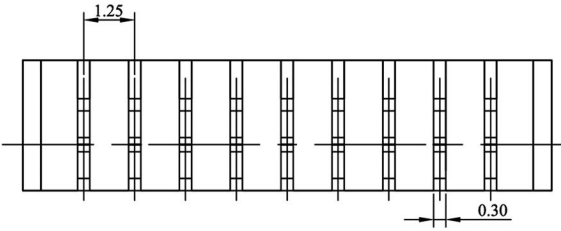
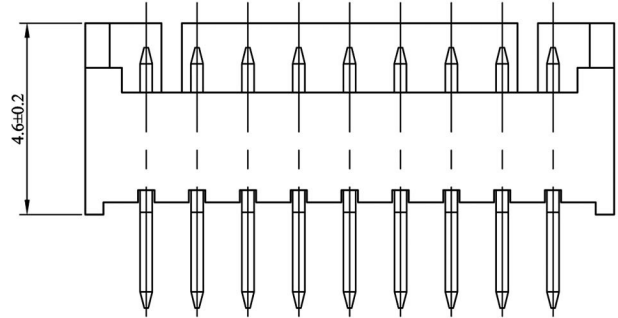
Current Rating: 1A AC, DC
Voltage Rating: 125V AC,DC
Operating Temp.: -25°C ~ +85°C
Insulation Resistance: 100MΩ/ min.
Dielectric Withstanding Voltage: 250V AC/ minute
Contact Resistance: 20mΩ/ max.

B

B

C

C



CKT.	A	B	C
2	1.25	3.15	4.25
3	2.50	4.40	5.50
4	3.75	5.65	6.75
5	5.00	6.90	8.00
6	6.25	8.15	9.25
7	7.50	9.40	10.50
8	8.75	10.65	11.75
9	10.00	11.90	13.00
10	11.25	13.15	14.25
11	12.50	14.40	15.50
12	13.75	15.65	16.75
13	15.00	16.90	18.00
14	16.25	18.15	19.25
15	17.50	19.40	20.50

D

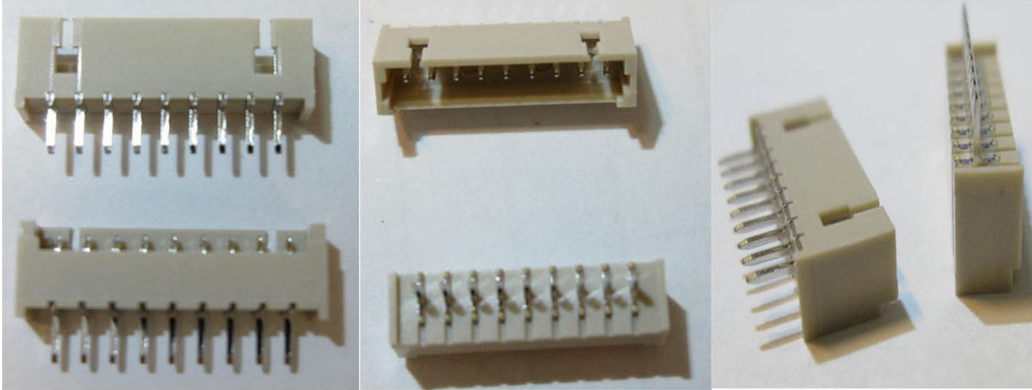
D

E

E

F

F



G

G

H

H

**RoHS
Compliant**

**HSM 玄茂科技股份有限公司
HSUAN MAO TECHNOLOGY CO., LTD.**

APPD.
核准
DWG.
製圖
DATE 制表日
2010/10/04

SCALE
比例
UNIT
單位
PAGE
張數

TOLERANCE
容許公差
X.XX ± 0.15
X.X ± 0.25
SIZE.
紙張尺寸
A 4
REV.
版次
A

PART NAME 品名
1.25mm WAFER 1XXXP STRAIGHT
TIN PLATING BEIGE COLOR
ROHS LOW-LEAD
PART NO.
料號 W1125-XXPSTXC0R

1 2 3 4 5 6 7 8